

## Medical basics of computed tomography

### Measurement with the computed tomography module

#### Objects of the experiment

- Understanding the material absorption of the X-Rays and device adjustment.
- Understanding the 3D-image reconstruction with possible image errors and artefacts.
- Recognition of different materials in medical related objects.

#### Principles

The initial intensity  $I_0$  of an X-ray beam is reduced after passing through a homogeneous material according to the Lambert law

$$I_s = I_0 e^{-\mu s}. \quad (1)$$

Here is  $I_s$  the resulting beam intensity,  $s$  the length of the way through the material and  $\mu$  the material absorption coefficient. The latter has the physical dimension 1/Length and is material specific, depending a.o. on the material density, atomic number and the energy (wavelength) of the beam. Absorption coefficient reveals therefore material distribution, knowledge of which is of a great importance in medicine and other fields.

For inhomogeneous materials the constant absorption coefficient  $\mu$  is replaced by  $\mu(s)$  and the exponent in eq. (1) becomes an integral

$$\ln \frac{I_s}{I_0} = - \int_0^s \mu(s') ds'. \quad (2)$$

For a general absorption coefficient  $\mu = \mu(x,y,z)$ , given as a function on the three dimensional space, the integral in eq. (2) is written as a path integral

$$\ln \frac{I_s}{I_0} = - \int_0^s \mu(x(s'), y(s'), z(s')) ds' \quad (3)$$

along the straight beam path. For a fixed plane  $\Sigma$  (in the three dimensional space) parametrized by a coordinate system  $(x',y')$ , any line is given by the slope  $m$  and the  $y'$ -intersect  $b$ . For a function  $\mu(x',y')$  on the plane  $\Sigma$  the integral along the line given by  $(m,b)$  is a functional assignment

$$(m,b) \mapsto \int_{-\infty}^{+\infty} \mu(x', mx'+b) dx', \quad (4)$$

called the Radon transformation. According to the Radon's theorem (J. Radon (1917)), the function  $\mu(x',y')$  can be reconstructed if function's integral is known for all  $(m,b)$ .

Computed tomography (CT) is a direct application of Radon's theorem. According to eq. (3) a line integral of the absorption coefficient  $\mu$  along the beam path in a sectional plane of a body is given by the logarithm of intensity fraction. Measuring therefore intensity fraction for many lines, absorption coefficient  $\mu$  can be reconstructed. Its graphical representation reveals the sectional plane compound structure. Substance identification with application to medicine is studied in experiments P6.3.8.3-4 and P6.3.8.13-14. A CT measurement scheme is shown in fig. 1. Intensity fraction measurement for many lines is realized by the rotation of the body.

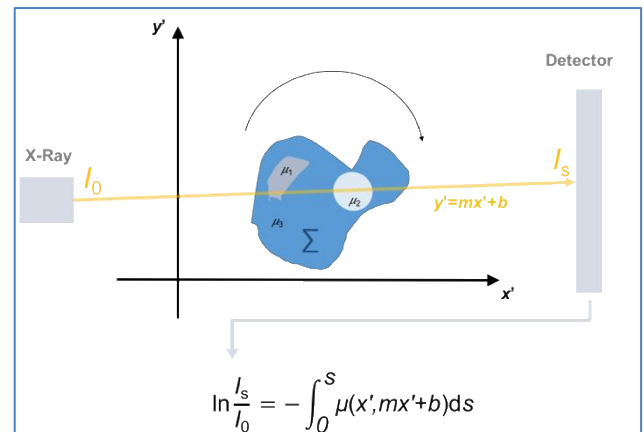


Fig. 1: A schematic representation of a CT-scan. Different colors mark different values of  $\mu$  in the sectional plane  $\Sigma$ .

Measurement time restricts the number of rotation angles. A high-pass filter is therefore applied to measured data before reconstructing  $\mu$ . A high-pass filter highlights boundaries of different materials (like bones and organs in a human body) as it amplifies the contrasts. It reduces therefore errors caused by the finite number of measurements. This procedure is called the *filtered Radon back transformation* and is the key of the CT algorithm.

The number of rotations and the used high-pass filter influence image quality and its resolution. The resolution is also restricted by the pixel size of the detecting device. A further source of image quality error is the continuous X-ray spectrum. Eq. (1) holds only for the monochromatic beam. Passing through material the X-ray beam spectrum is shifted to higher energies. This effect is called *beam hardening* and is studied in experiments P6.3.8.4 and P6.3.8.14. Absorption coefficient values in the whole body are obtained by combining measured data for different sectional planes. In this case the smallest image unit is called a *voxel*. Graphical representation of  $\mu$  is the end result of the computed tomography. Details of the graphical representation are studied in experiments P6.3.8.5 and P6.3.8.15.

The 1979s Nobel Prize in Physiology or Medicine was awarded to Allan M. Cormack and Godfrey N. Hounsfield for their development and application of computed tomography.

Devices	
1 X-Ray apparatus.....	554 800
1 Goniometer.....	554 831
1 X-Ray tube, Au.....	554 866
1 Computed tomography module.....	554 821
1 Phantom, 3D.....	554 823
1 LEGO® adapter.....	554 825
additionally required:	
1 PC with Windows XP/Vista/7/8/10 (x86 or x64)	

In this experiment a CT scan of the phantom is done. The phantom is a test block for the computed tomography consisting of several layers for the valuation of the highly and lowly contrast resolution. Looking at different sectional planes, students learn to identify different materials. Furthermore, they learn device adjustment, sources of errors and resolution restrictions. The effects of X-Ray hardening and presence of metallic parts are demonstrated.

### Setup

- Insert the Au tube in the X-ray apparatus.
- Mount the goniometer in the X-ray experiment chamber and move it to the right side. Fix the goniometer using the two screws in its lower part.
- Put the computed tomography module on the right side of the X-ray apparatus and connect the latter to the computed tomography module using a USB cable.
- Connect the computed tomography module to a PC using a USB cable.

### Camera adjustment

#### Note

Camera adjustment must be performed prior to the measurement.

- Turn on the PC, the X-ray apparatus and the computed tomography module.
- Start the CT software and find the expandable tabs on the left.
- Choose the video device (fig. 2: 3 und 4) and turn it on (fig. 2: 1) while X-ray beam and high-voltage are off (fig. 3: 2).
- Identify defective pixels and correct (fig. 2: 6 and 7).
- Turn on the X-rays (fig. 3: 1).
- Record a white image averaging over app. 10 images and use this as a reference image (fig. 2: 8 und 9).
- Turn off the X-rays (fig. 3: 2).

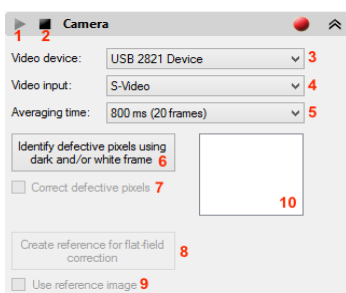


Fig. 3: Video device settings

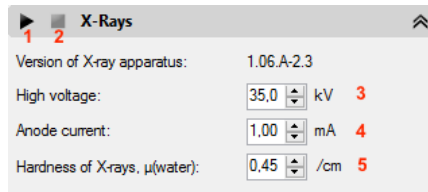


Fig. 4: X-ray setting: 1: X-ray on, 2: X-ray off, 3: High voltage, 4: Anode current, 5: X-ray hardness.

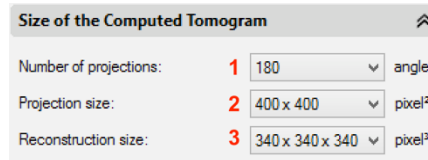


Fig. 2: CT size setting: 1: Number of projections, 2: Projection size, 3: Reconstruction size.

### Rotary axis adjustment

#### Note

Rotary axis adjustment must be performed after every new device setup.

- Fasten a rubber band on the tip of the PMMA arms of the object holder to keep the empty holder stable.
- Mount the object holder into the goniometer and close the X-ray apparatus.
- Turn on the X-rays.

In the now visible X-ray image of the object holder, the prolonged rotation axis should appear horizontal in the middle of the image and coincide with the red line. In case of clearly seen misalignment turn off the X-ray radiation and make a rough camera adjustment. Use the screws around the camera inside the CT module to tilt and roll. The two screws on the left hand side of the optical axis must be rotated in the same amount. Close the computed tomography module and turn on the X-rays and the camera. Carry out a measurement keeping all settings as shown in figs. 2 – 4 by clicking on the button.

After the measurement the X-rays are switched off automatically. Perform the following steps:

- Change to the 2D view by clicking on the 2D button in the upper toolbar.
- Move the slider in the bottom to the **left** until a sectional plane close to the rubber band is shown on the screen (compare fig. 6).
- Vary the rotary axis value (fig. 5: 1) until the double contours are roughly minimal (fig.6: b).
- Press “1st position” button (fig. 5: 2) and wait until the software optimizes the position.
- Move the slider in the bottom to the **right** until a sectional plane close to the object holder’s bottom plane is shown on the screen.
- Vary the rotary axis value (fig. 5: 1) until the double contours are minimal (fig.6: b).
- Press “2nd position” button (fig. 5: 3) and wait until the software optimizes the position.
- Turn off the X-rays and adjust camera position using the screws in a way the CT software suggest (fig.5: 4, 5 and 6).

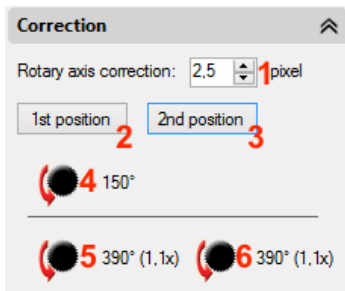


Fig. 5: Correction: **1**: Rotary axis correction, **2**: 1<sup>st</sup> position, **3**: 2<sup>nd</sup> position, **4-6**: suggested camera position adjustment.

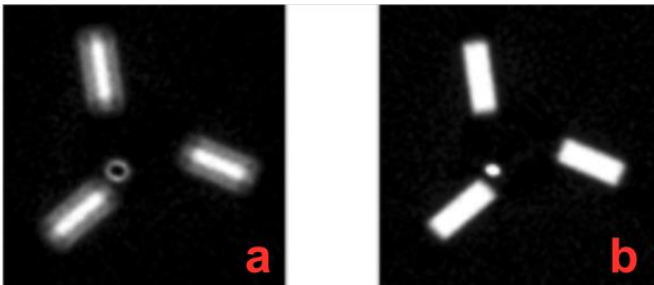


Fig. 8: Rotary axis adjustment: **a**: double contours, **b**: no double contours – the correct position.

## Carrying out the experiment

- Carry out the upper steps for the camera and the rotary axis adjustment.
- Increase the number of projections (fig. 4: **1**) to 360 or higher depending on the graphic card.
- Unmount the object holder from the goniometer and mount the LEGO® adapter instead.
- Mount the phantom onto the LEGE® adapter and carry out a measurement keeping all other settings as shown in figs. 2 – 4.

During the measurement, the image reconstruction can be observed in 2D as well as in 3D mode. Use the **2D** and the **3D** buttons in the upper toolbar to change modes. The image is gradually getting better as more and more angular steps are done and taken into account in the Radon transformation.

In 2D mode image representation can be changed between “Projection”, “Log projection” and “Filtered log projection” (fig. 7: **1**). In this way we can visualize the difference between the standard X-ray image and the filtered projections used for the CT image reconstruction.

## Evaluation

(a) General graphical effects:

The main CT software graphical effects are briefly listed below. The detailed analysis of all graphical effects is studied in experiments P6.3.8.5 and P6.3.8.15. A detailed description of the software is available in the instruction sheet. Please see the manual for catalogue number 554821

### a.1) 2D and 3D modes

Use the **2D** and the **3D** buttons in the upper toolbar to switch the modes. In 2D mode it can be changed between different sectional planes. Use the slider in the bottom. Change displays between “Projection”, “Log projection” and “Filtered log projection” (fig. 7: **1**).

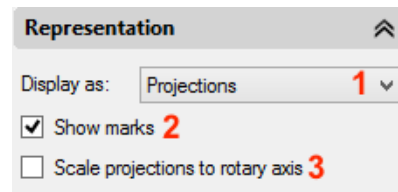


Fig. 7: Representation: **1**: Displays as, **2**: Show/Hide Marks, **3**: Scale projections to rotary axis.

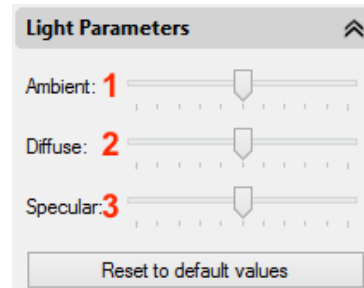





Fig. 6: Light parameters: **1**: Ambient, **2**: Diffuse, **3**: Specular.


In this way it can be distinguished between the standard X-ray image and the filtered projections used for the CT image reconstruction. The sectional planes in 2D mode are orthogonal to the rotary axis.

In 3D mode the image of the scanned object can be rotated and observed from different view angles. Use the slider in the bottom to change between different sectional planes. In contrast to 2D view, sectional planes shown in 3D mode are orthogonal to the observer's looking direction and parallel to the screen respectively.


### a.2) Arbitrary sectional plane

Use the  button in the upper toolbar while in 3D mode to change the representation between the selected sectional plane or the selected sectional plane and the rest of the scanned object behind it. If the  button is active, the sectional plane shown on the screen can be chosen for radiographic evaluations by clicking on the  button.

### a.3) Colour spectrum

Use the  button in the upper toolbar to choose one of the 5 different colour spectra can be chosen. Different colours highlight different absorption coefficient values. Some of the colour schemes are better suited to colour blind users.

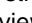
### a.4) Switching light on

Use the  button to turn on a virtual light source, which amplifies the CT-scan's 3D impression. Expand the “Light Parameters” (fig. 8) to change settings.

### a.5) Intensity and transparency

In the “Intensity and Transparency” tab (fig. 9) different representation options can be set up. The upper slider (fig.9: **1**) changes the image intensity while the lower slider (fig.9: **2**) changes the transparency.

### a.6) Stereoscopic view

An even stronger 3D effect is achieved by activating the stereoscopic view with the  button. The image in this mode must be viewed through the anaglyph (red-cyan) glasses.

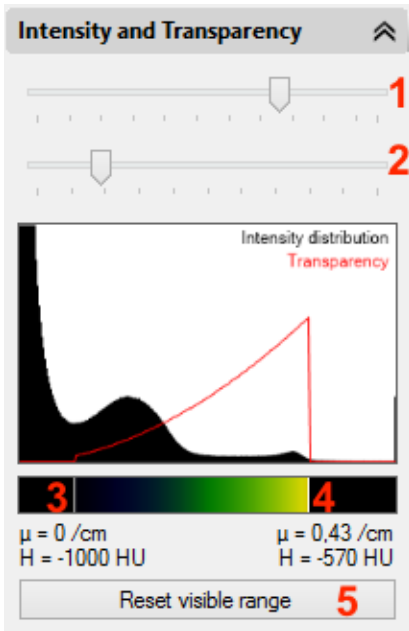


Fig. 9: Intensity and transparency: 1: Intensity, 2: Transparency, 3: Lower transparency limit, 4: Upper transparency limit, 5: Reset settings.

(b) CT's medical basics:

- Change to the 2D view by clicking on the 2D button in the upper toolbar.
- Find phantom's different sectional planes. Use slider in the bottom of the screen.
- Switch between colour and grayscale representation. Use the button.
- Change contrast and intensity using the slider in the radiography tab.
- Change to 3D mode. Use the 3D button.
- Rotate phantom's 3D image and use the slider in the bottom to see different sectional planes.
- Change intensity and transparency (fig. 9).

Measuring example

2D mode

Fig. 10 shows how different material can clearly be distinguished by colour or brightness respectively. The colour gradient in the direction of the rotary axis is due to the hardening effects. In the grayscale the brighter the material is the higher is its absorption coefficient.

In fig. 11 only two of four hole sets are resolved. This is due to resolution restrictions, which are discussed below. Using the X-Ray image sensor, the two here missing hole sets can be resolved as demonstrated in experiment P6.3.8.12.

3D mode

The hardening effects are responsible for two colours in the phantom's 3D view (fig. 12, left). The phantom appears to be covered by an envelope made out of a soft material.

Fig. 13 shows the stereographic representation. The image must be viewed through the anaglyph (red-cyan) glasses.

Fig. 14 shows sections through the phantom in 3D mode. Changing the transparency (fig. 9: 2), materials with high absorption coefficient (like metals and bones) can be identified. An example is shown in fig. 15. The metallic screws as well as the Teflon disc are clearly seen in high transparency.

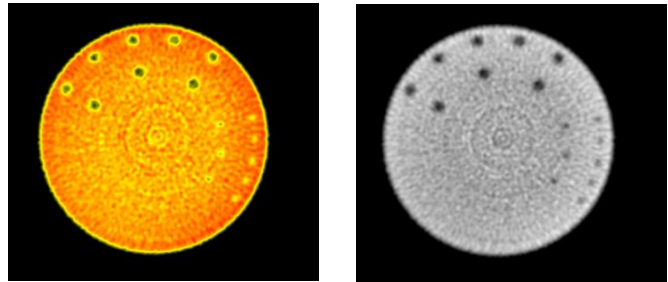


Fig. 10: Phantom's sectional plane containing different material samples. (left) Color representation, (right) Grey scale representation.

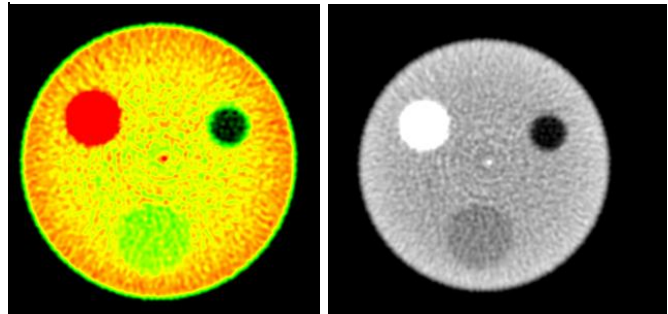


Fig. 11: Phantom's sectional plane with holes. (left) Color representation, (right) Grey scale representation.

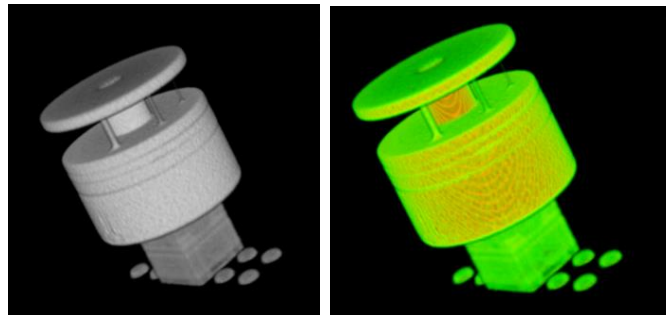


Fig. 12: Phantom's 3D view. (left) Color representation, (right) Grey scale representation.

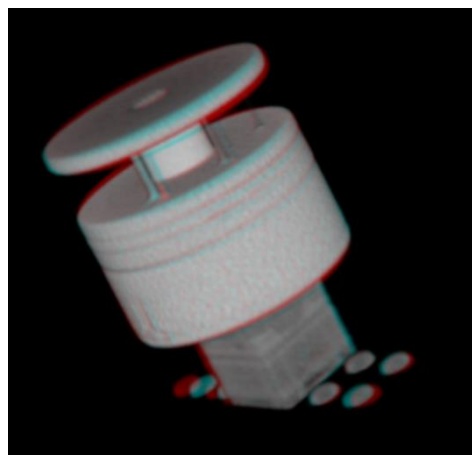


Fig. 13: Phantom's 3D view, stereoscopic representation. Must be viewed through the anaglyph (red-cyan) glasses.

Materials with high absorption coefficient produce artificial errors and effects on the CT images. Fig. 16 shows sectional plane with metallic screws. The phantom seems to be cut in its lowest section. Holding the phantom in the hand one can verify that there are no cuts at all.

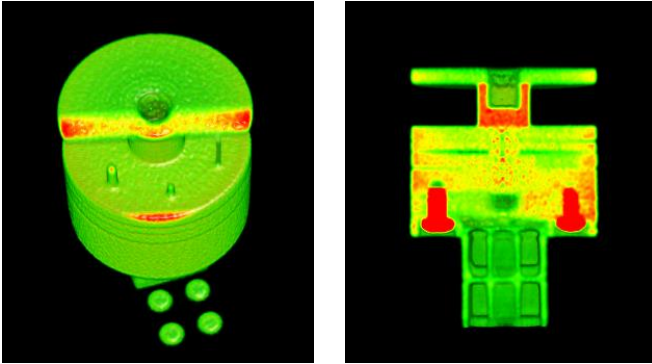


Fig. 14: Phantom's sectional planes in 3D view.

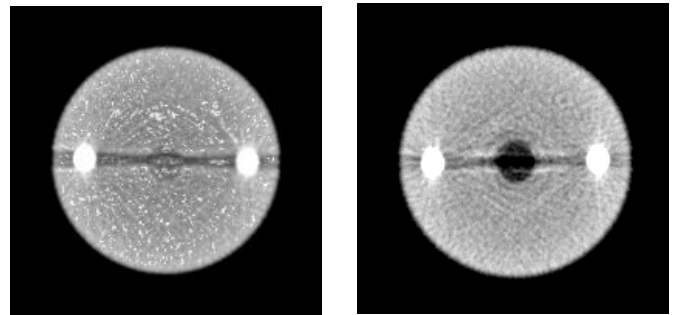


Fig. 16: Artefacts due to metallic elements: (left) 3D view; (right) 2D view.

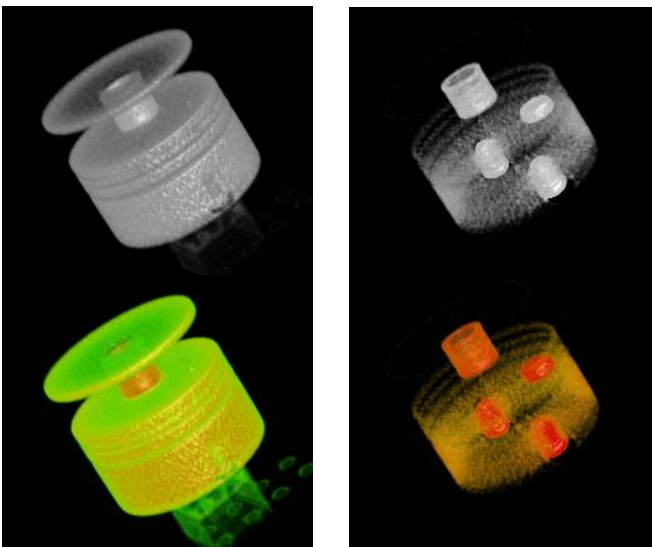


Fig. 15: Phantom's 3D view with: (left) low transparency, (right) high transparency.